

TOOLSTRING SUSPENDING BAR CLAMP

The **LIMAR**[®] Toolstring Suspending Bar Clamp is designed to safely lift, lower and suspend a toolstring at surface across a Quick Union connection.

The Clamp is generally used when deploying or retrieving flow control devices or lengthy toolstrings in operations where rig-up height is limited.

After assembling the Clamp beneath the fish neck of the toolstring it can be locked into place by a knurled screw which safely secures the hinged gate.

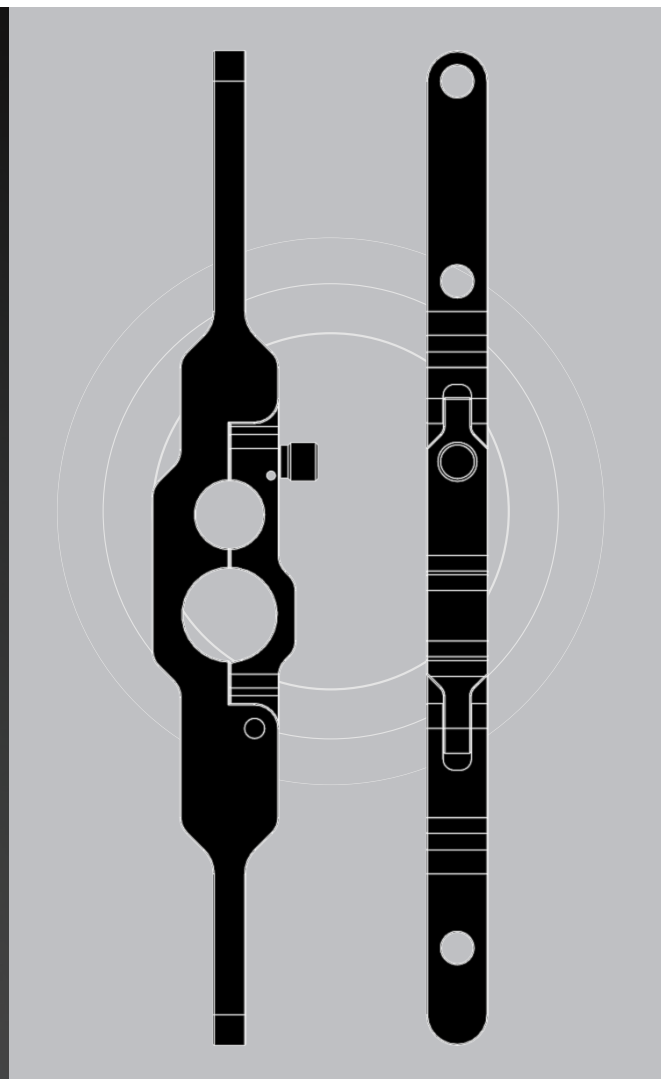
The toolstring can then be safely suspended, raised or lowered using the lifting attachments provided.

TOOL APPLICATIONS:

- To provide a simple means of safely lifting, lowering and suspending a toolstring at surface when rig-up height is limited

DESIGN FEATURES & BENEFITS:

- Weld-free design
- Available in a range of sizes to suit industry standard fish necks and quick unions
- Dual fish neck size option for operational flexibility and inventory reduction
- Lifting eyes positioned for central, balanced lift point
- Simple, robust design ensuring ease of operation for the end user
- Selected components QPQ treated



TECHNICAL DATA

Assembly Part No.	To Suit Fish Neck(s)	Single / Dual	Quick Union Options	Safe Working Load
1112-1187-XXXX-RX	1.187"	Single	up to 7" Nominal	500 KG
1112-1187-1375-XXXX-RX	1.187" / 1.375"	Dual	up to 7" Nominal	500 KG
1112-1375-XXXX-RX	1.375"	Single	up to 7" Nominal	500 KG
1112-1375-1750-XXXX-RX	1.375" / 1.750"	Dual	up to 7" Nominal	500 KG
1112-1750-XXXX-RX	1.750"	Single	up to 7" Nominal	500 KG
1112-1750-2312-XXXX-RX	1.750" / 2.312"	Dual	up to 7" Nominal	500 KG
1112-2312-XXXX-RX	2.312"	Single	up to 7" Nominal	500 KG
1112-3120-XXXX-RX	3.120"	Single	up to 7" Nominal	500 KG

XXXX- denotes the nominal Quick Union dimension
 For additional sizes or further information please contact sales@limaroiltools.com